

**FLUID SELECTION****4.23.21.999**

Customer:  
 Contact:  
 Telephone:  
 Fax:  
 Job:

Date: 4/1/2004  
 From:  
 Company:  
 Return Tel:  
 Return Fax:

**GIVEN DATA****Construction**

Item: HWCM1  
 Coils Per Bank: 1  
 Allow Opp. End: No  
 Tube OD (IN): 5/8  
 Coil Duty: Heat-Return Bend  
 Fins Per Inch: Optimize  
 Rows: 2  
 Fin Surface: Optimize ABC  
 Fin Height (IN): 19.50  
 Finned Length (IN): 16.50  
 Tubing Mat. (IN): 0.020 Copper  
 Fin Mat. (IN): 0.0075 Aluminum  
 Conn Qty/Size (IN): 1 / Optimize  
 Circuiting: Optimize

**Air Side**

Air Flow (SCFM) 2,250.00  
 Altitude (FT): 0.00  
 Ent. Air DB (°F): 0.00  
 Lvg. Air DB (°F): 70.00  
 Total Capacity (MBH): 0.00  
 Max Air PD (IN WG): 0.00

**Fluid Side**

Fluid Type: Water  
 Ent. Fluid (°F): 180.00  
 Lvg. Fluid (°F): 160.00  
 Fluid Flow (GPM): 0.00  
 Max FPD (FT H2O): 20.00  
 TurboSpirals: No

OUTPUT DATA		Specified Coil
Model Number:		<b>5MS1402B</b>
Air Velocity:	(SFPM)	<b>1,006.99</b>
Total Capacity:	(MBH)	<b>165.63</b>
Sens. Capacity:	(MBH)	<b>N/A</b>
Lvg. Air DB:	(°F)	<b>67.88</b>
Lvg. Air WB:	(°F)	<b>N/A</b>
Standard APD	(IN WG)	<b>0.77</b>
Lvg. Fluid:	(°F)	<b>160.60</b>
Fluid Flow:	(GPM)	<b>17.48</b>
Fluid PD:	(FT H2O)	<b>0.34</b>
Fluid Vel.:	(FPS)	<b>1.46</b>
Conn Size:	(IN)	<b>2.00</b>
Weight (Dry):	(LB)	<b>37</b>
Weight (w/Fluid):	(LB)	<b>46</b>
Notes:		<b>B</b>

**Notes:**

B) Rated In Compliance With ARI 410.

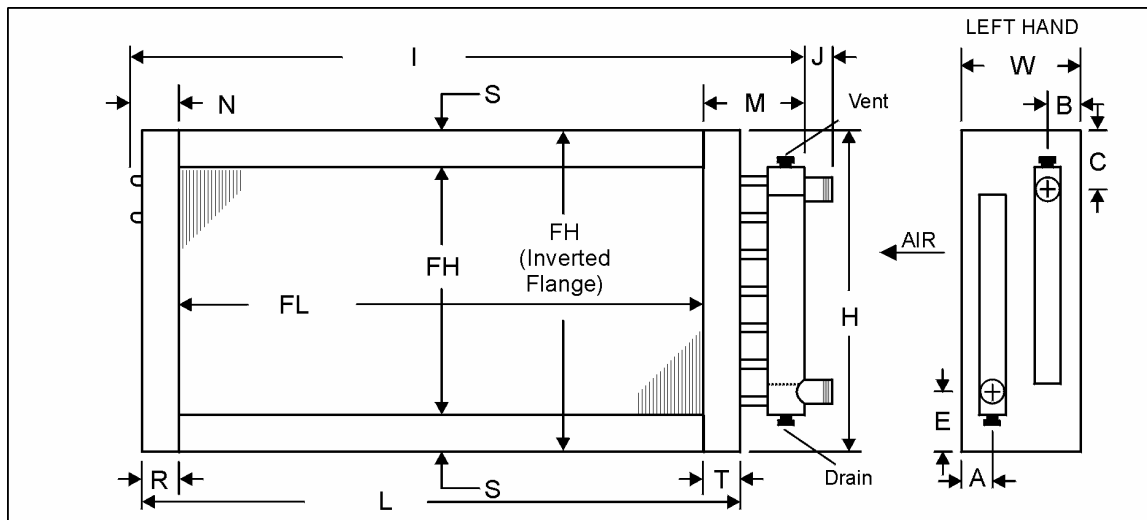
# CERTIFIED DRAWING

Customer:  
 Contact:  
 Telephone:  
 Fax:  
 Job:

Date: 4/1/2004  
 From:  
 Company:  
 Return Tel:  
 Return Fax:

ITEM	QTY	MODEL NUMBER						HAND
		TYPE	FPI	ROWS	FIN	FH (IN)	FL (IN)	
HWCM1	1	5MS	14	02	B	19.50	16.50	Left

MATERIALS OF CONSTRUCTION		OPTIONS			
<b>Fins</b>	.0075 Aluminum	<b>Casing Type</b>	Flanged	<b>Label Kit</b>	No
<b> Tubes</b>	.020 Copper	<b>Vent/Drain</b>	.50 FPT on End Cap	<b>Phenolic Coating</b>	No
<b>Casing</b>	Galvanized Steel			<b>Mounting Holes</b>	No
<b>Connection</b>	2.000 MPT Carbon Steel			<b>Turbospirals</b>	No



DIMENSIONAL DATA (IN)																	
CONNECTION														FLANGES			
SIZE	A	B	C	D	E	F	H	I	J	L	M	N	R	S	T	W	
2.00	2.38	2.38	3.51	N/A	2.51	N/A	22.50	23.50	6.00	19.50	5.00	2.00	1.50	1.50	1.50	7.50	

*Notes:*

### GENERAL NOTES

- All dimensions are in inches.
- Phenolic coated coils require a longer lead-time since they must be re-tested after coating.
- .375 inch mounting holes will be provided on 6 inch centers from the centerline of the fin height and finned length. Not available when S < 0.75 inches.
- The supply line should be connected to the lower connection on the leaving air side for counterflow operation.
- Coils will vent and drain through factory-installed vent and drain fittings when mounted level for horizontal flow.
- Connection location other than standard could affect vent and drain locations. Consult factory.