

FLUID SELECTION**4.23.21.999**

Customer:
 Contact:
 Telephone:
 Fax:
 Job:

Date: 4/1/2004
 From:
 Company:
 Return Tel:
 Return Fax:

GIVEN DATA**Construction**

Item: HWCM5
 Coils Per Bank: 1
 Allow Opp. End: No
 Tube OD (IN): 5/8
 Coil Duty: Heat-Return Bend
 Fins Per Inch: Optimize
 Rows: 2
 Fin Surface: Optimize ABC
 Fin Height (IN): 46.50
 Finned Length (IN): 48.50
 Tubing Mat. (IN): 0.020 Copper
 Fin Mat. (IN): 0.0075 Aluminum
 Conn Qty/Size (IN): 1 / Optimize
 Circuiting: Optimize

Air Side

Air Flow (SCFM) 15,700.00
 Altitude (FT): 0.00
 Ent. Air DB (°F): 0.00
 Lvg. Air DB (°F): 70.00
 Total Capacity (MBH): 0.00
 Max Air PD (IN WG): 0.00

Fluid Side

Fluid Type: Water
 Ent. Fluid (°F): 180.00
 Lvg. Fluid (°F): 160.00
 Fluid Flow (GPM): 0.00
 Max FPD (FT H2O): 20.00
 TurboSpirals: No

OUTPUT DATA		Specified Coil
Model Number:		5MS1202B
Air Velocity:	(SFPM)	1,002.46
Total Capacity:	(MBH)	1,230.16
Sens. Capacity:	(MBH)	N/A
Lvg. Air DB:	(°F)	72.25
Lvg. Air WB:	(°F)	N/A
Standard APD	(IN WG)	0.67
Lvg. Fluid:	(°F)	159.36
Fluid Flow:	(GPM)	121.97
Fluid PD:	(FT H2O)	3.12
Fluid Vel.:	(FPS)	4.28
Conn Size:	(IN)	3.00
Weight (Dry):	(LB)	144
Weight (w/Fluid):	(LB)	194
Notes:		A

Notes:

A) ARI Certified And Rated In Accordance With ARI 410.

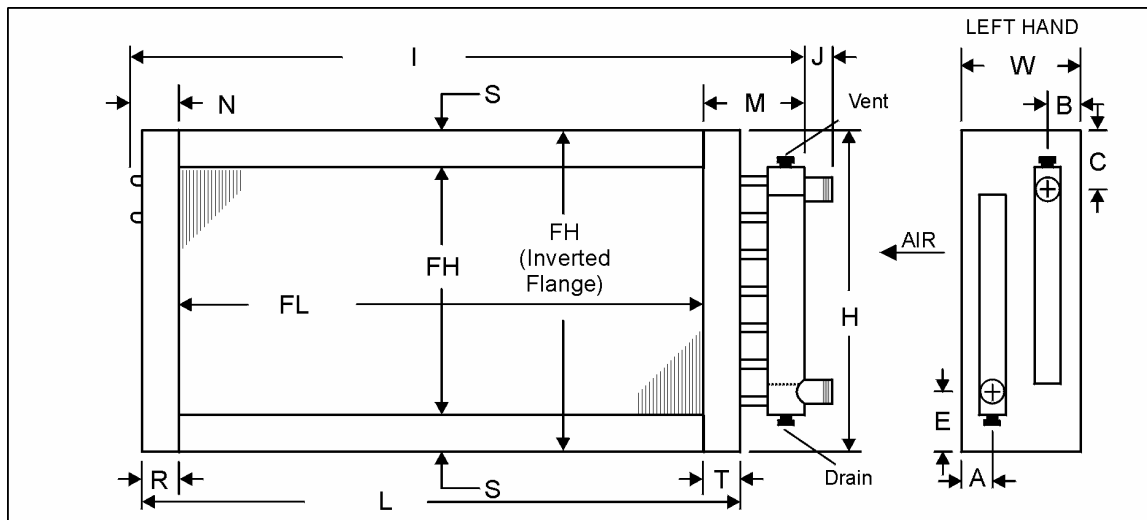
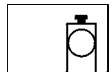
CERTIFIED DRAWING

Customer:
 Contact:
 Telephone:
 Fax:
 Job:

Date: 4/1/2004
 From:
 Company:
 Return Tel:
 Return Fax:

ITEM	QTY	MODEL NUMBER						HAND
		TYPE	FPI	ROWS	FIN	FH (IN)	FL (IN)	
HWCM5	1	5MS	12	02	B	46.50	48.50	Left

MATERIALS OF CONSTRUCTION		OPTIONS			
Finns	.0075 Aluminum	Casing Type	Flanged	Label Kit	No
Tubes	.020 Copper	Vent/Drain	.50 FPT on End Cap	Phenolic Coating	No
Casing	Galvanized Steel			Mounting Holes	No
Connection	3.000 MPT Carbon Steel			Turbospirals	No



DIMENSIONAL DATA (IN)																	
CONNECTION														FLANGES			
SIZE	A	B	C	D	E	F	H	I	J	L	M	N	R	S	T	W	
3.00	2.07	2.07	4.57	N/A	3.07	N/A	49.50	56.12	6.00	51.50	5.62	2.00	1.50	1.50	1.50	7.50	

Notes:

GENERAL NOTES

- All dimensions are in inches.
- Phenolic coated coils require a longer lead-time since they must be re-tested after coating.
- .375 inch mounting holes will be provided on 6 inch centers from the centerline of the fin height and finned length. Not available when S < 0.75 inches.
- The supply line should be connected to the lower connection on the leaving air side for counterflow operation.
- Coils will vent and drain through factory-installed vent and drain fittings when mounted level for horizontal flow.
- Connection location other than standard could affect vent and drain locations. Consult factory.